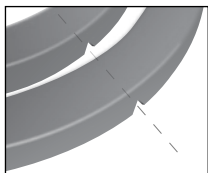
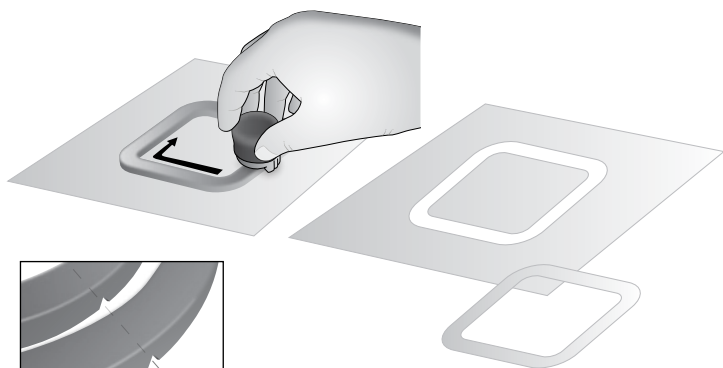


Product Instructions

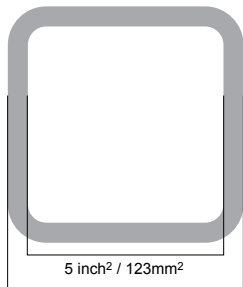
Square Shapes

For use with Tonic Shape~Mate System



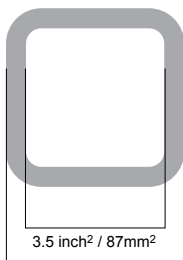
Line up markers for perfect concentric shapes

Shapes can be used to cut the following sized Squares:



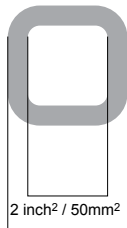
5 inch² / 123mm²

5.75 inch² / 149mm²



3.5 inch² / 87mm²

4.25 inch² / 113mm²



2 inch² / 50mm²

3 inch² / 76mm²

- Easy to use - Cutter Carriage (sold separately) travels along Tonic Square shapes
- Cut outside or inside the Square to create 6 different size shapes or 3 frames as illustrated
- Non slip feet holds shapes in place for effortless cutting
- To protect your work surface use with Tonic Cutting mats